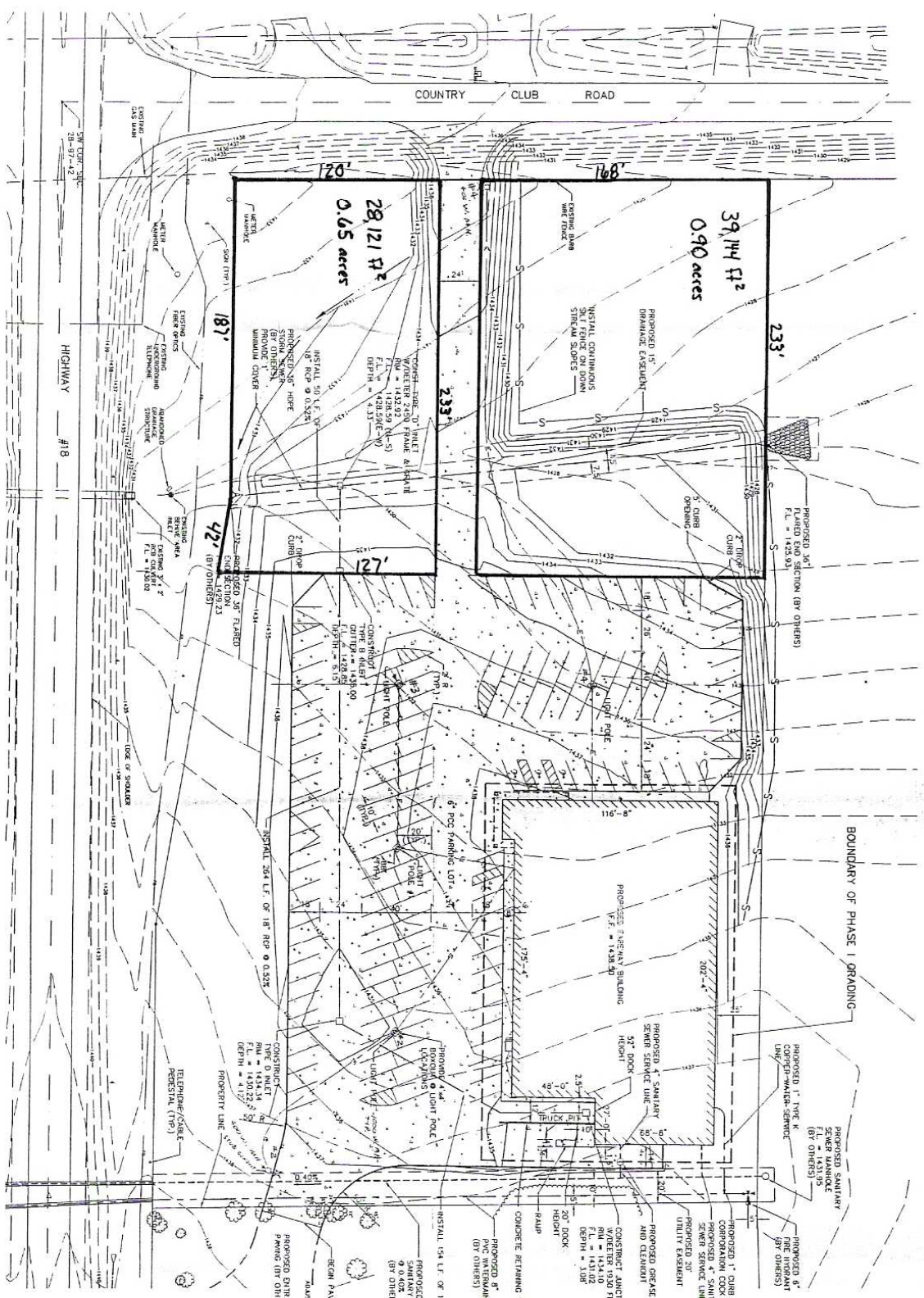
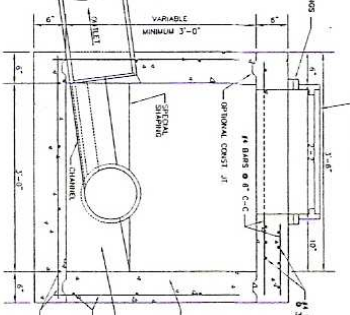


SHELDON



NOTE: ALL FILL SHALL BE COMPACTED TO 95% OF STANDARD PROCTOR AT PLUS OR MINUS 3% OF OPTIMUM MOISTURE.



STORM SEWER JUNCTION BOX

BENCHMARK: RM OF WINNOCHE IN NW QUAD OF THE SITE
 ELEVATION = 1439.53